



Please scan the QR code
with your mobile phone
to download the APP.

↓ Tuya Smart



WIRELESS HOME SECURITY BATTERY CAMERA SYSTEM

HOMEBASE QUICK START GUIDE

CONTENTS

- 1 LIST OF PRODUCTS
- 2 PRODUCT OVERVIEW
- 3 HOMEBASE NETWORK ACCESS
- 4 CAMERA CHARGING
- 5 CAMERA INSTALLATION



WARM REMINDER

1. Due to transport safety the camera is not fully charged when leaving the factory, It's necessary full charged , which takes 3–5 hours. Please connect to the HomeBase to charge with USB cable.
2. The factory settings of this camera has been paired with the HomeBase . Please press the power button before using the camera. There will be a music prompt. The red light indicates that the camera has entered normal working mode.
3. When installing the camera, fix the bracket first, and watch the image with the mobile APP to determine the bracket angle and fix it.
4. After the camera has been used for a long time and the battery is exhausted, the camera needs to be removed from the camera bracket. Please connect to the HomeBase to charge it with a USB cable. The charging takes 8 hours to fully charge. The battery level is displayed on the APP.
5. When the camera is consuming too much power, please select the "Human Body Filtering" option on the APP, which will filter out unnecessary events that cause the camera to frequently wake up, alarm, and record.
6. When the camera wakes up, alarms and records are not timely, please select the "Alarm Sensitivity Level" option on APP, which will cause frequent camera wake-up, alarm and record, thus the battery power consumption will be very fast.
7. The first user to add a HomeBase is the "master" and has the most permissions, and other people can only use it through the owner's sharing. If you want to change the owner, you need to insert a fine needle into the RESET hole at the bottom of the HomeBase, then open the APP, and re-select "+" to add the camera until it is complete.

1. LIST OF PRODUCTS

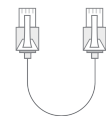
1.1 HomeBase



HomeBase



Power Adapter

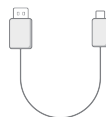


Ethernet Cable

1.2 Camera



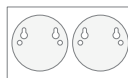
Camera



USB Power Cable



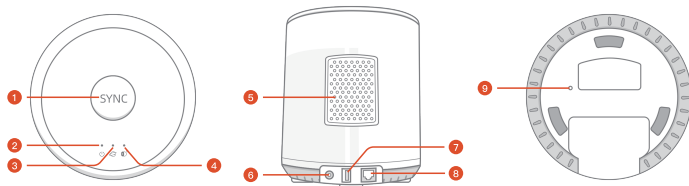
Mounting Bracket

Mounting Screws
and Anchors

Install Stickers

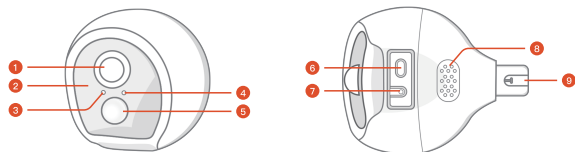
2. PRODUCT OVERVIEW

2.1 HomeBase



- | | | |
|-------------------------------|----------------------------|-----------------------------|
| 1. Pairing button | 2. Power indicator - green | 3. Network indicator - blue |
| 4. Pairing indicator - yellow | 5. Speaker | 6. Power connector |
| 7. USB port | 8. Ethernet port | 9. Resetting hole |

2.2 Camera

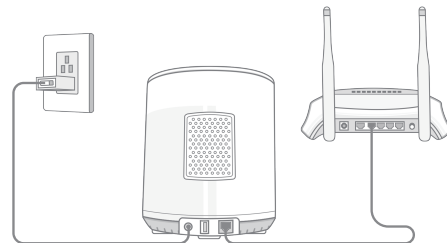


- | | | |
|------------------|------------------------|---------------------------|
| 1. Lens | 2. Infrared LED | 3. Photoresistor Resistor |
| 4. Indicator LED | 5. PIR infrared sensor | 6. Power connector |
| 7. Start button | 8. Speaker | 9. Bracket port |

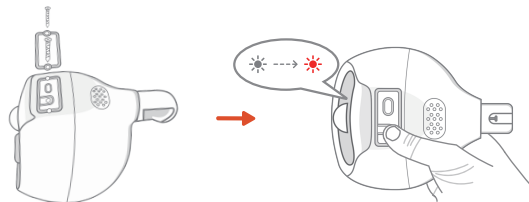
3. HOMEBASE NETWORK ACCESS

3.1 Plug in HomeBase

① Find the HomeBase power adapter and plug in the power cord then use the Ethernet Cable to connect HomeBase to the router and wait for HomeBase to send out a voice prompt, indicating that the HomeBase has started successfully.

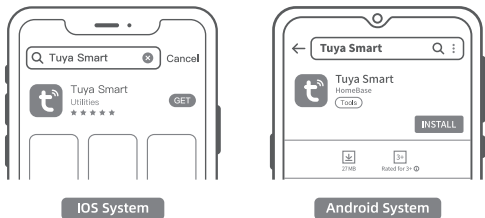


② After unscrewing the screws at the bottom of the camera, remove the back cover and press the button at the bottom of the camera for a long time. Red light indicates successful startup (Note: After starting, the back cover needs to be reinstalled on the camera).



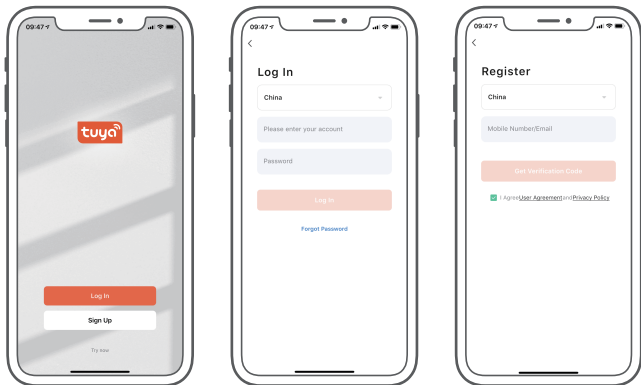
3.2 Download APP Tuya Smart and Register

- ① For IOS system, please search for “Tuya Smart” in App Store.
- ② For Android system, please search for “Tuya Smart” in the Google Play.



3.3 Register for an account

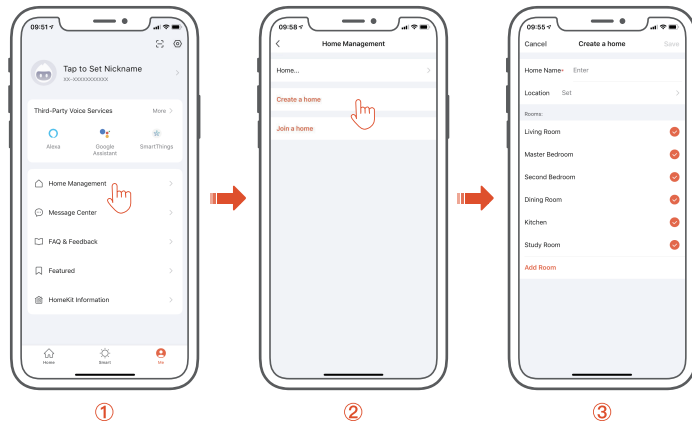
- (1) Register for an account, using your mobile phone number or email number to register.
- (2) After successful registration, log in to your account password.

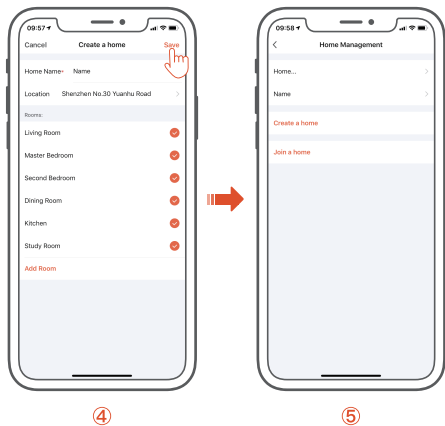


3.4 Create a home

Note: If you need to share the base station to your family's mobile phone, please "Create a home" on the APP first

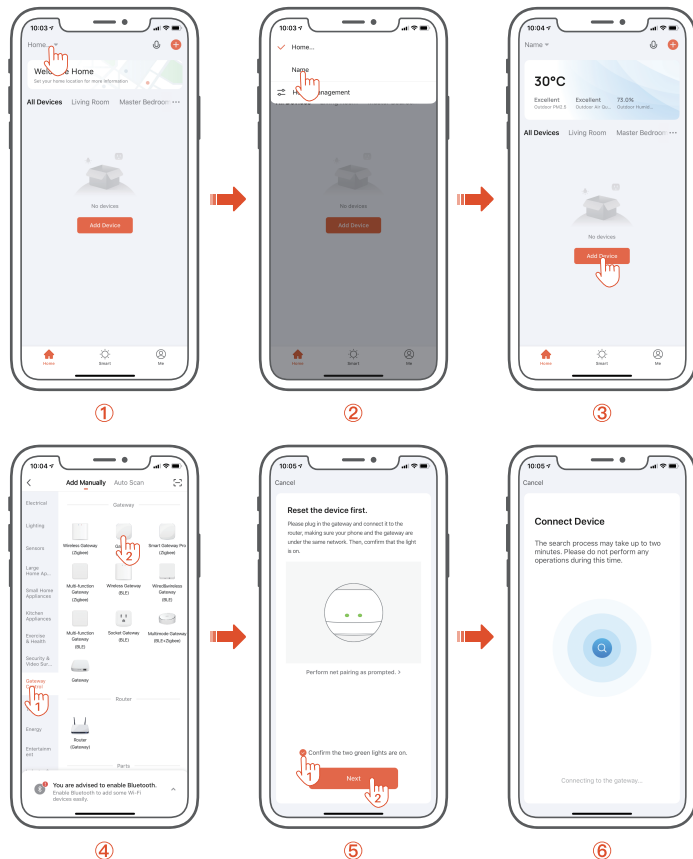
1. Open the “Me” page and click “Home Management”.
2. Click “Create a home”.
3. Entering “Home Name” and “Location”.
4. Click “Save”.
5. The home is successfully created.

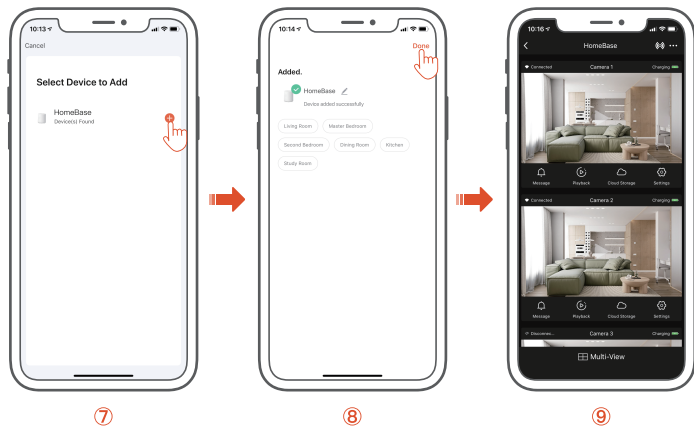




3.5 How to Add HomeBase

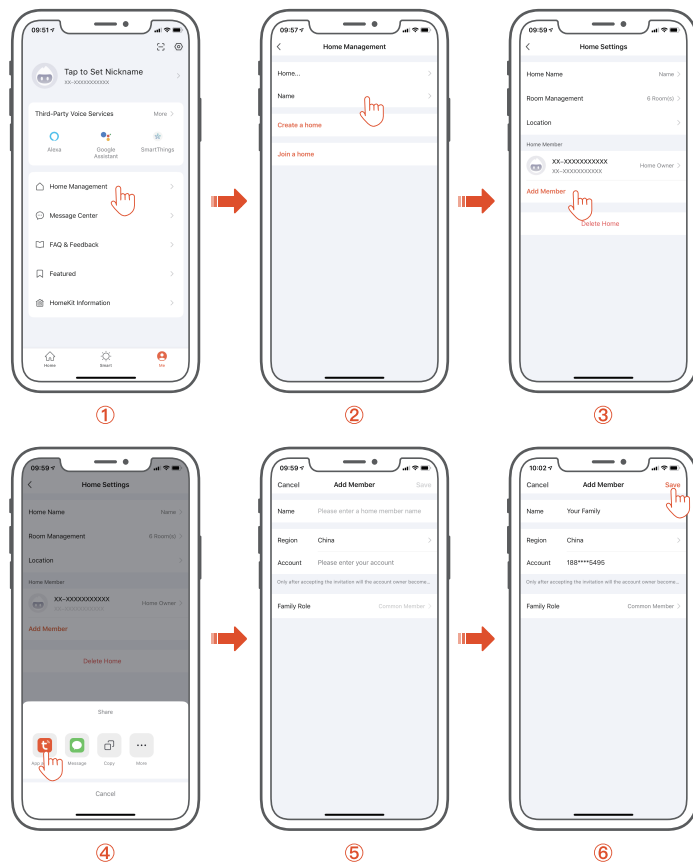
1. Click the down arrow to enter the home management page.
2. Switch the created home.
3. Click “Add Device” to enter the category of the added device list.
4. Find the “Gateway Control” category and select the “Gateway (Zigbee)” add method.
5. Add HomeBase according to the prompt voice and picture text;
 - ① Please plug in the gateway and connect it to the router, making sure your phone and the gateway are under the same network. Then, confirm that the light is on.
 - ② If you confirm that the 2 traffic lights are always on, please click to check the small circle.
 - ③ Click “Next”.
6. Within 2 minutes, wait for the APP to automatically search for HomeBase.
7. Find the device “HomeBase” and click “+”.
8. A page prompts that the addition is successful, click “Done”.
9. Jump to the device list.



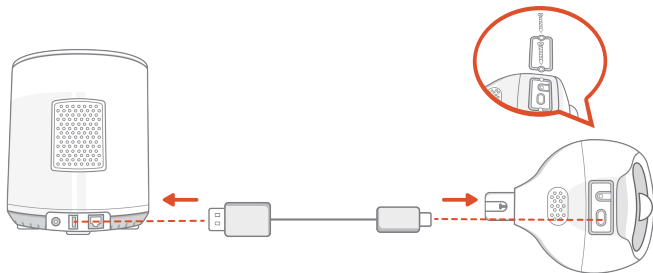


3.6 Share HomeBase with Your Family and Friends

1. Open the “Home Management” page.
2. Click on the home that has been created.
3. Click “Add Member”.
4. Click “App account”.
5. Enter the name and account of the member to be added.
6. Click “Save”, the base station is successfully shared.



4. CAMERA CHARGING



Note: When charging the camera, remove the back cover after unscrewing the bottom screw of the camera. When fully charged, the back cover needs to be reinstalled on the camera.

The charging USB cable in the box, the TYPE-C port is connected to the camera end, and the other end is connected to HomeBase. Start charging and see the following instructions of the camera:

LED Prompt	The blue LED flashes when charging
	The blue LED is on when fully charged
Charging Time	10 hours (minimum battery to fully charged)

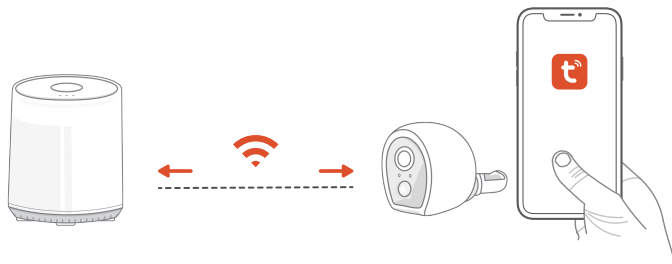
The camera is fully charged before leaving the factory, and the standby time of the camera will vary according to the number of alarm triggers and wakeups per day. It is calculated as 20 times from the camera wakes up alarm every day. Each time the camera wakes up and works for 10 seconds, it can be used for 5-6 months when the battery is fully charged.

5. CAMERA INSTALLATION

5.1 Choose a location of the installation

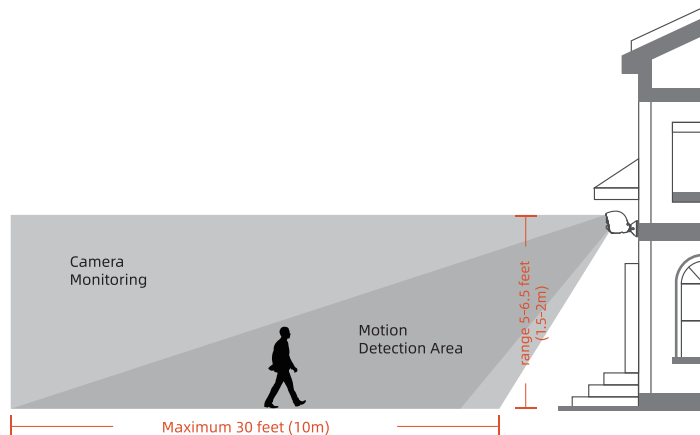
To find where to install the camera, you need to test the wireless signal strength

- ① To test the wireless signal strength, please place the camera and mobile phone where you want to install the camera.
- ② If the wireless signal is not stable, please move the camera as close to HomeBase as possible.



5.2 Choose the height and location of the installation

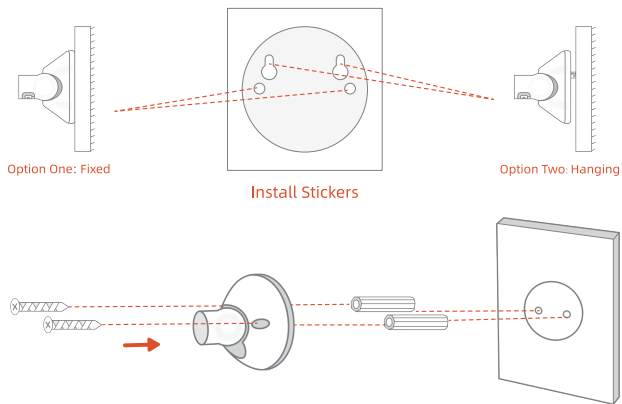
Hang the camera 5-6.5 feet (1.5-2m) above the ground. This height maximizes the detection range of the camera's motion sensor. Avoid placing the camera in direct sunlight.



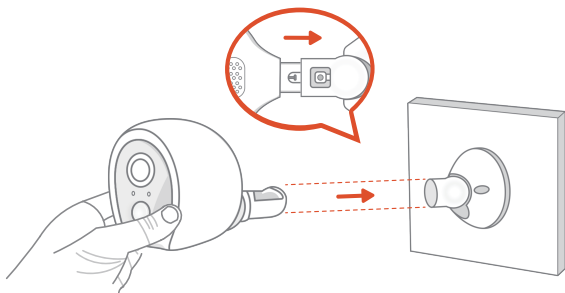
5.3 Install the camera

The camera can be installed indoors and outdoors

① Fix the base of the bracket firmly to the wall where you want to install.



② Align the camera bracket port with the bracket and install it on the bracket, and adjust the camera viewing angle through the real-time video stream of KeepEyes App.



③ If you want to disassemble, just hold the buckle on the bracket.

